

The LEADER of
INNOVATION *and* DESIGN



ELEVATE
— STRUCTURES —

A  CENTRAL STATES COMPANY



Elevate Structures is a national metal building subcontractor and the leader of innovation and design for the self-storage industry. Our goal is to be ON-SITE, ON-SCHEDULE, ALL THE TIME for your building project. We have deep relationships with a broad spectrum of general contractors, engineers, and architects. Over many years of service, we have constructed hundreds of self-storage facilities including single story, multi-story up to nine stories, conversions, mezzanine systems, and R.V. canopies and buildings. We offer the patented Alpha Framing System, 5X10 light gauge framing systems, 10X10 structural framing systems, customized structural steel packages, metal exterior wall and siding systems, and corrugated through fastened and standing seam metal roofing systems. We serve the United States.



TIME

Finish faster with industry leading planning and execution

- Save up to 3 months on bi-level and multi-story projects with our patented Alpha Framing System
- Industry leading engineering and drafting resources
- Highly trained, experienced, and responsive project managers
- Focused pre-construction planning and project close out approach



EXPERTISE

Utilize our experience for the best outcome

- 25+ Years, thousands of projects, all project types, highly complex job site conditions
- Practical suggestions to facility layout and design
- Communication of current design trends, techniques and pitfalls
- Long-term strategic relationships with engineers, installers, suppliers, and related trades



QUALITY

Great facilities built to specification and to last

- The industry's best roof; site formed standing seam metal roof without lap joints
- Eliminates concrete stains and debris in bottom tracks.
- Project Managers with limited number of projects and regularly scheduled job site visits
- Consistent, experienced, English-speaking installers that are proud craftsmen
- World class quality control in drafting, procurement, installation, and close out



VALUE

Get the most for your investment dollar

- Alpha Framing significantly reduces GC overhead, interest carried, and you open sooner.
- Design with practical value engineering options
- Proprietary design concepts that lower total investment cost
- Long-term industry specific engineers with cost effective design options

ALPHA FRAMING SYSTEM



Alpha Framing System is a 10'x10' light gauge framing system mainly comprised of factory formed and assembled light gauge columns and beams that provides superior performance in wind uplift, shear, and gravity loads. In addition, this system changes the construction sequence so that partition panels may be installed after the installation of the roof which allows other trades to begin work up to two months faster and eliminates concrete stains on partition panels. Alpha Framing System provides a cleaner, faster, and stronger design as compared to traditional framing systems.

Customers choosing our innovative design are already reaping the benefits. Owners and general contractors alike, are experiencing favorable gains in time and money as a result of incorporating the Alpha Framing Systems into their projects. This is true for both multi-story and bi-level facilities.



CLEANER

No Stains, No Spills & Less Dust

- No concrete staining or spillage on partitions
- No bottom track to collect dust or debris – eliminating ongoing cleaning
- Galvanized spangle finish protects columns and beams from rust and corrosion during construction



FASTER

Frame up to 3x faster

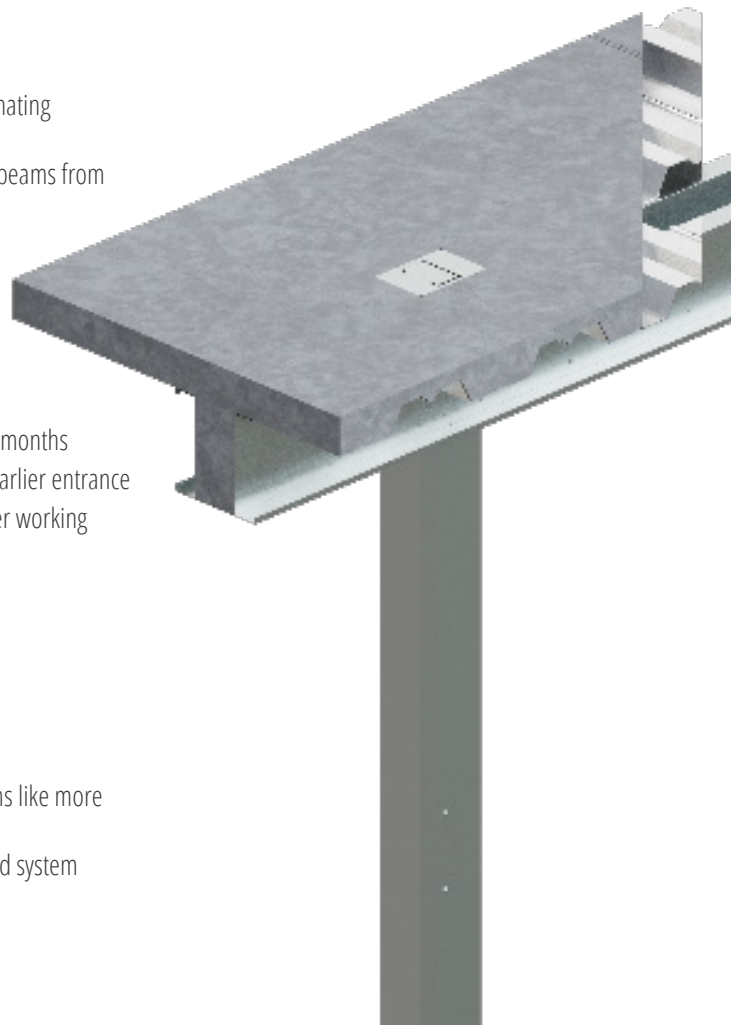
- Accelerates the construction schedule by up to 3 months
- Quicker elevated slab pours allow other trades earlier entrance
- Reach the roof and dry-in sooner providing better working conditions for all trades



STRONGER

Integrated Composite Strength

- Pre-assembled light gauge metal system performs like more expensive structural steel
- Partition panels not required as part of integrated system





Our reputation in multi-story construction is among the very best because we find the right engineering for your situation, propose economical ways to solve complicated scenarios and allow our project managers to excel on delivering the finished product.

The most cost-effective and flexible method of building, a multi-level storage facility uses a cold rolled, light gauge framing system for buildings less than five stories. In addition, we have a proprietary hybrid structural system for five-plus story buildings that require fire rating. Our company is capable of providing any height, facade or parapet for the style you want. We can even integrate traditional and nontraditional building materials for your desired look. With our expert, efficient design, you'll use fewer concrete footings and save money.

Building a multi-story structure is also the best way to maximize the yield on a small parcel of land, giving you coveted access to higher density population areas. In addition, a multi-story building is perfect for raising store front visibility.

Multi-story buildings provide an upscale look and better security for tenants. Our continuous roof allows for large footprint designs and we have the capability of rolling a continuous roof with no lap for up to 250 feet.



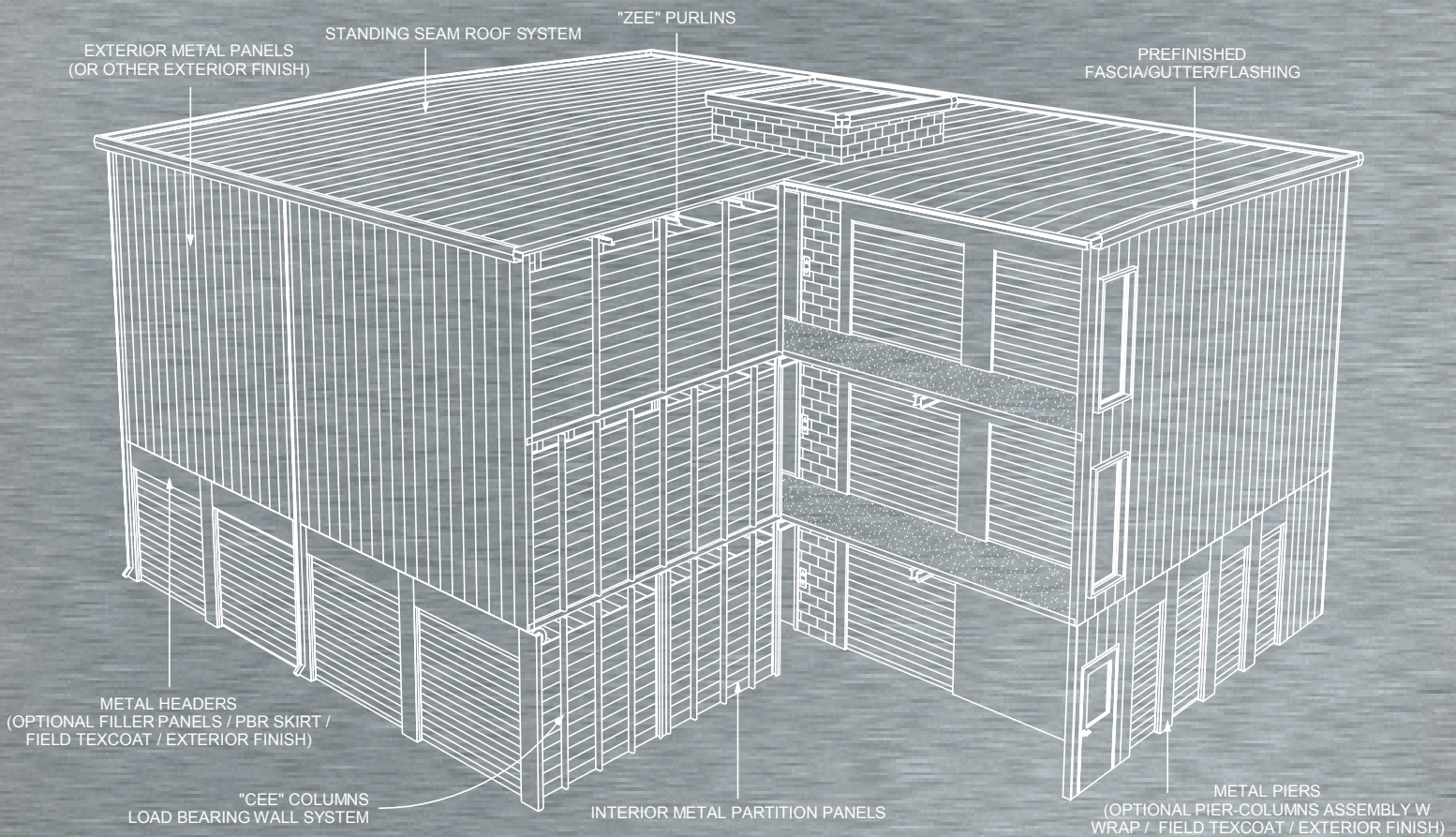
TIME

Save up to 3 months on construction with our patented Alpha Framing System



EXPERTISE

Consistent, experienced, English-speaking installers that are proven craftsmen



QUALITY

Site-formed, standing seam roof system Designed for specific job conditions



VALUE


Industry-specific engineers, proprietary design concepts and proprietary construction methods reduce time and costs


SINGLE STORY BUILDINGS

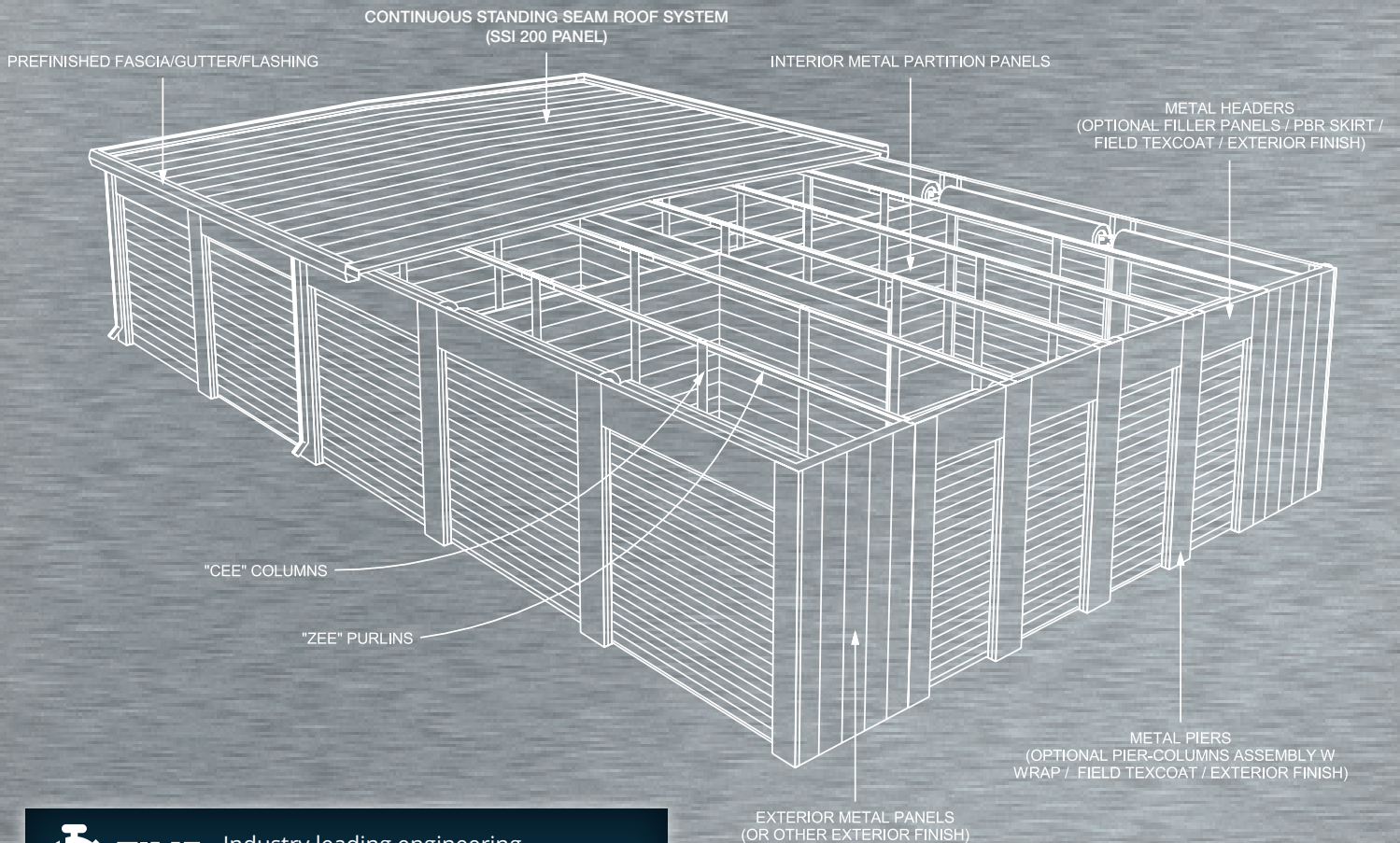



A pleasing look is important, so we are able to integrate numerous building materials to create the best exterior facade. We can match virtually any profile, color or finish you have in mind. Corrugated, pre-painted, flush and textured finishes as well as a range of heights are available. To avoid step downs, we can build on a one percent slope. Also, if you have the width or room, we can add efficiency by creating non climate-control areas around the perimeter of climate-controlled buildings.



 **QUALITY** Industry's best roof - SSI 200 Panel

 **VALUE** Match virtually any profile, color or finish in expanding existing facilities



 **TIME** Industry leading engineering and drafting resources



If you're a general contractor with a large building to construct, you want a partner you can count on. We are your ideal choice for all types of custom steel, effective design and expert tradesmen. From simple to complex, we've built thousands of facilities and look forward to working with you.

Our economically designed buildings provide optimal use when customized layouts or spans are required. We can handle drive-throughs, offices, canopy integration and loading areas too. We'll help you integrate heavy structural with light gauge to achieve most economical outcome.



VALUE

Proprietary, hybrid structural system for 5+ story buildings



EXPERTISE

Practical suggestions for facility layout and design even in seismic areas

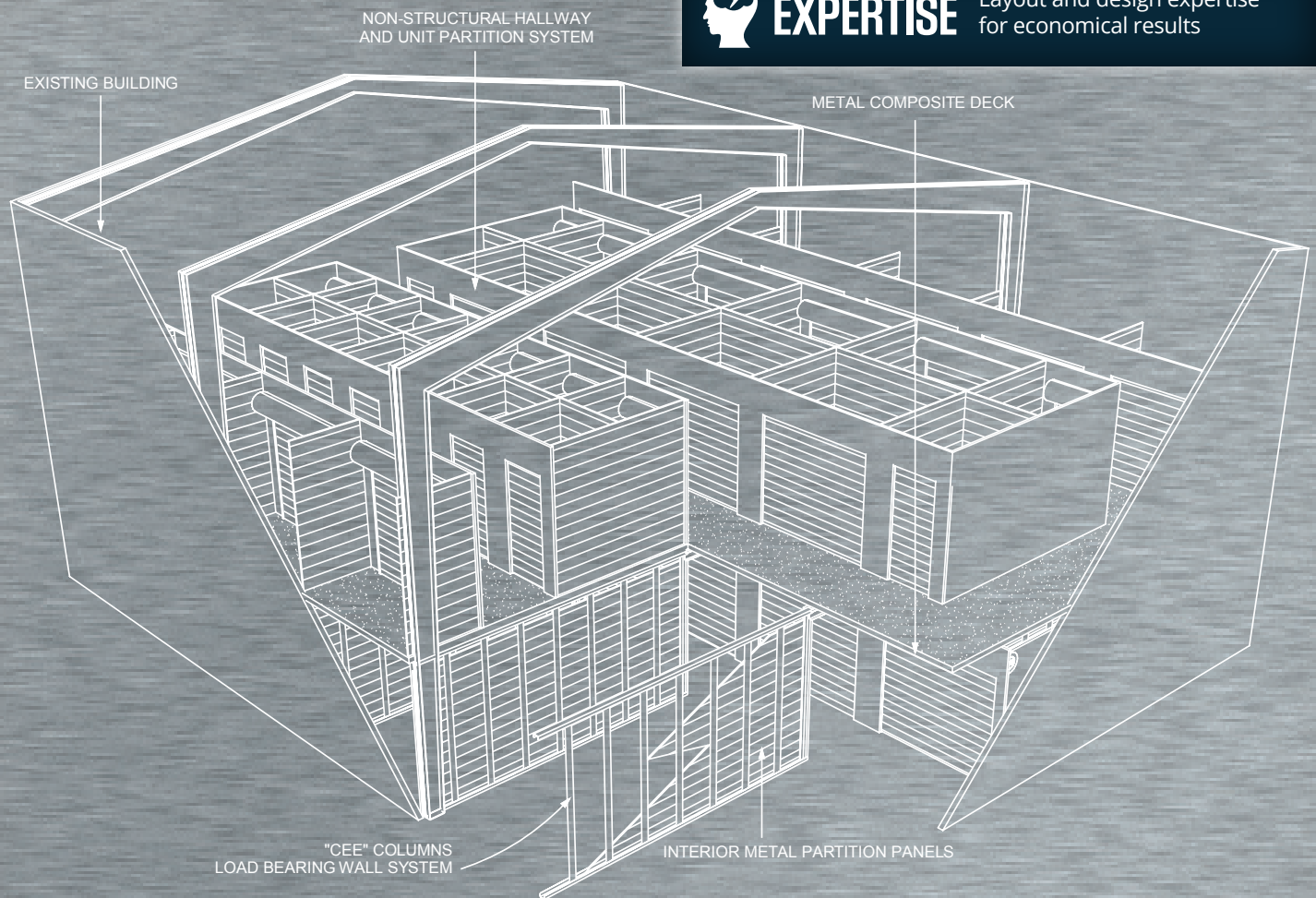


QUALITY

World-class quality control in drafting, procurement, installation and close-out



Add valuable space with an additional floor to maximize a tall existing building. A mezzanine is easy to add using light-gauge framing. You'll appreciate doubling your footprint to increase the rentable area. Our expert design and engineering can save on construction cost by dispersing loads to avoid large concrete footings and costly excavation. Add value and reusable area inside almost any existing building.



EXPERTISE

Layout and design expertise
for economical results



TIME

Focused pre-construction planning
and project close-out approach

BOAT & RV STORAGE

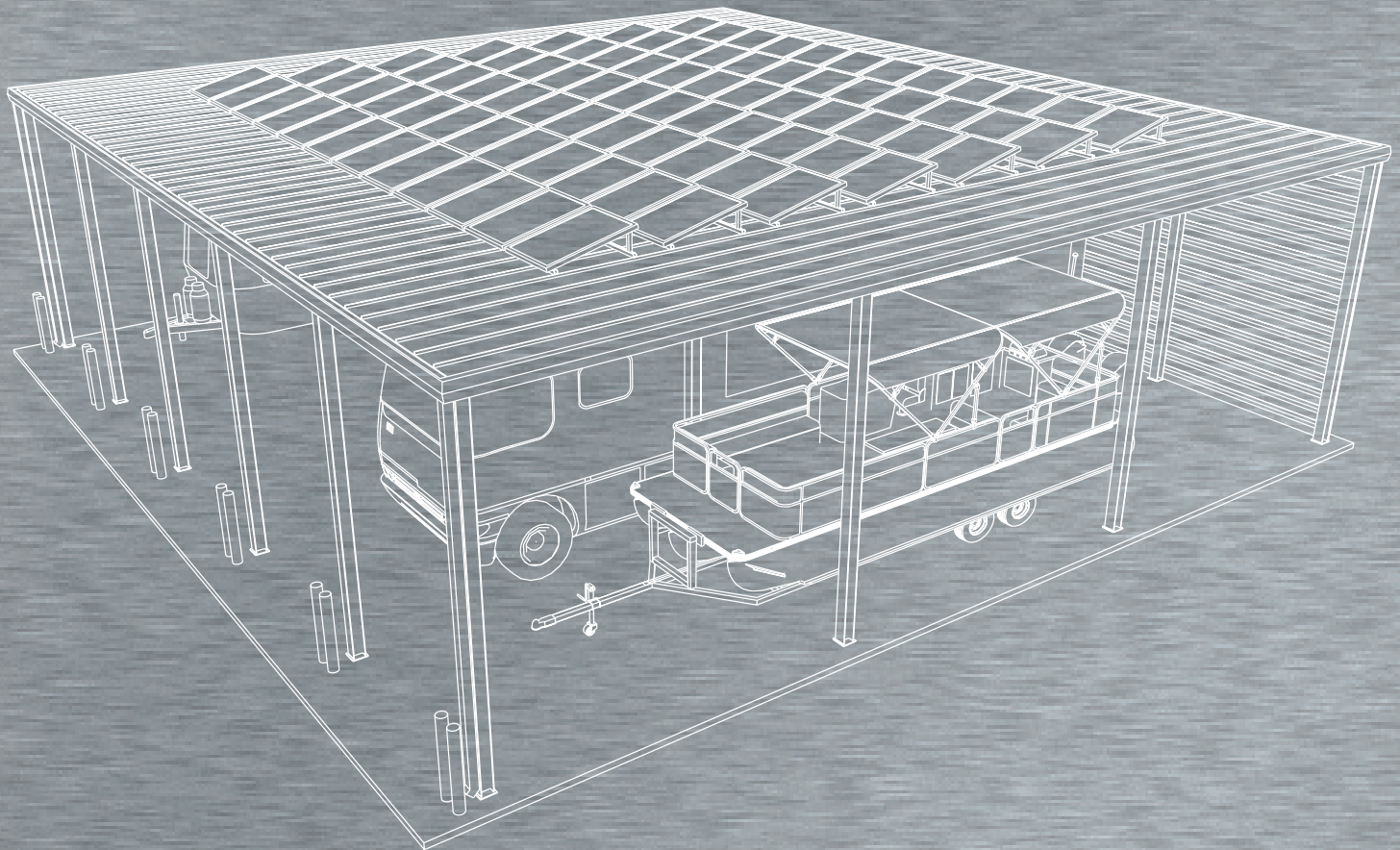


If you need boat and recreational vehicle storage, we can provide covered, three sided enclosed and completely enclosed structures. Galvanized framing is optional. Storage canopies are the ideal way to protect from sun damage. Varying heights can be constructed to accommodate the tallest of boats and RVs. Double space spans provide easy entry and exit. We can even add solar panels.



VALUE

Communication on excess design
with practical value engineering



EXPERTISE

Communication on
current design trends,
techniques and pitfalls



Panel Systems Include:

- Horizontal and Vertical
- Multitude of Colors & Profiles
- Install a multitude of siding systems with similar or contrasting color

INSULATED METAL PANELS – 11 OPTIONS

Thicknesses to achieve your desired “R” value
Texture and profiles to meet your architectural requirements

EXPOSED FASTENER PANELS

Most economical choice
Vintage appearance
Mix horizontal and vertical for enhanced aesthetics
Easy to replace
Shortest lead time
Quickest installation time
Less framing required

CONCEALED FASTENER PANELS

Architecturally preferred
Greater design flexibility
Vertical and horizontal applications

GUTTERS / DOWNSPOUTS

SMACNA Standards
Match existing structures
All industry options available



QUALITY

Full spectrum of products, world-class quality control in procurement, installation and close-out



ROOF PANELS



FORMED FROM 24 GAUGE ACRYLIC COATED GALVALUME (STANDARD)

OPTIONAL PRE-FINISHED COLORS TO MEET AESTHETIC OR LOCAL ZONING REQUIREMENT.

OPTIONAL PANEL WIDTHS AND THICKNESS TO MEET LOCAL DESIGN CODES FOR WIND UPLIFT IN COASTAL ENVIRONMENTS

ATTACHED USING CONCEALED FLOATING CLIP SYSTEM TO ALLOW FOR THERMAL EXPANSION AND CONTRACTION, MECHANICALLY SEALED AFTER INSTALLATION FOR SUPERIOR WATERTIGHTNESS AND UPLIFT STRENGTH.

SINGLE AND DOUBLE LOCK SEAMING AVAILABLE TO MEET REQUIRED CODES FOR UPLIFT.



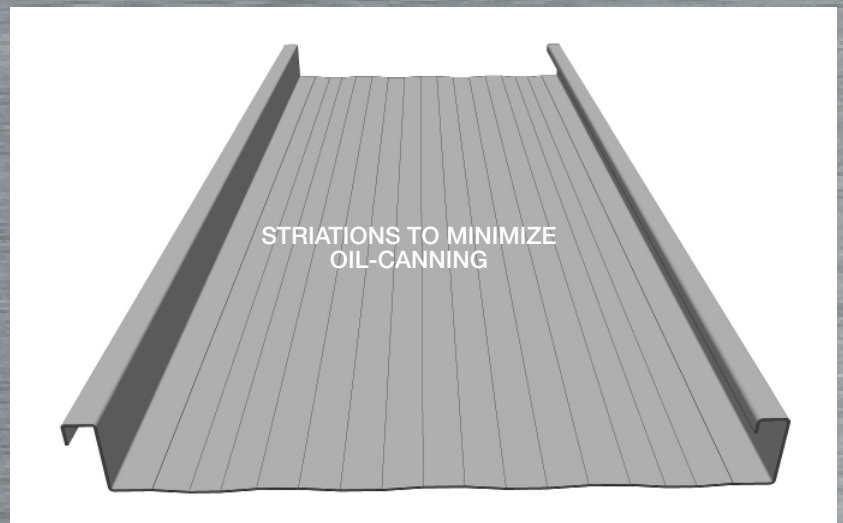
ALL MATERIALS CARRY A STANDARD 20 YEAR FINISH WARRANTY.

FLORIDA PRODUCT APPROVAL #FL13655-R1



QUALITY

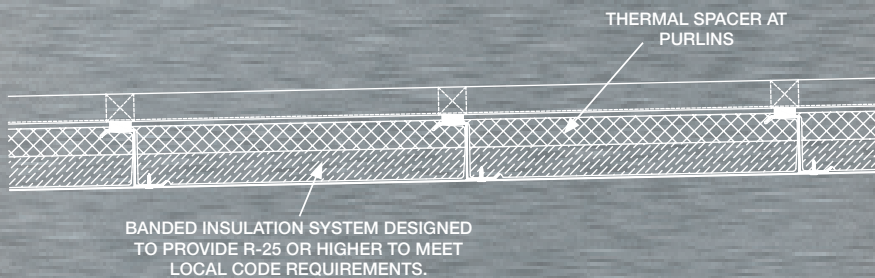
Continuous roofs eliminate the need for problematic lap joints



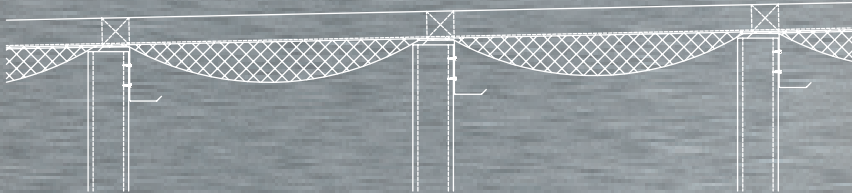
Our custom site formed standing seam roof system greatly reduces shipping cost, material handling cost and waste. By site forming our roof panels we totally eliminate the need for horizontal lap joints in your roof system. All panels are formed and installed in continuous lengths from edge to edge of your building.

ROOF INSULATION

CONTINUOUS STANDING SEAM ROOF SYSTEM



CONTINUOUS STANDING SEAM ROOF SYSTEM



STANDARD INSULATION OVER PURLINS FOR NON-CLIMATE CONTROLLED BUILDINGS.

SAG&BAG SYSTEM (2 LAYER) IS AVAILABLE WHEN CODE REQUIRES UP TO R-30 ROOF INSULATION.

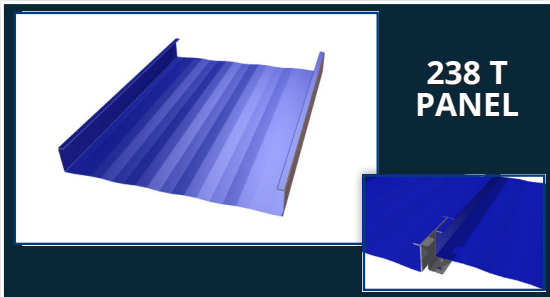


Our non-climate controlled buildings come with a 2" layer of vinyl reinforced fiberglass blanket insulation to prevent condensation.

We will provide you with the best method to meet your insulation requirements while keeping your budget in mind using prescribed methods that reduce expensive materials and labor.

Fiberglass blanket insulation with metal siding and pre-insulated wall panels are options for climate controlled wall assemblies.

PANEL PROFILE OPTIONS



**238 T
PANEL**

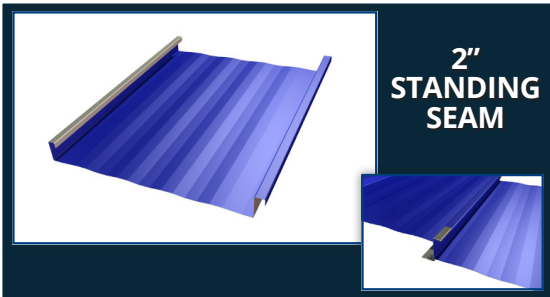
238T Panel

- Premium system for high-wind areas and under designed existing structures
- Works for all applications

Testing/Agency Approvals

- 24 & 22 Gauge Steel, .032 and .040 Aluminum, and 20 OZ Copper
- 16", 18", and 24" Widths
- Uplift: FM 4471, UL 580, ASTM E1592

- Static Water: FM 4471 Appendix G, ASTM E2140
- Air & Water Infiltration: ASTM E1680, ASTM E1646 Impact Resistance: UL Class 4, FM Class 1-SH
- Fire Rating: UL Class A
- Texas Windstorm
- Florida Building Code: #FL 16606.1, 16606.2, 16606.3



**2"
STANDING
SEAM**

2" Standing Seam

- Most economical standing seam system
- Eliminates exposed fasteners
- Works on almost any application (low slope and steep slope; open framing or solid deck)

Testing/Agency Approvals

- 24 & 22 Gauge Steel
- 12", 16", and 18" Widths
- Single & Double Lock Profiles
- Uplift: UL 580 (Class 90), ASTM E1592
- Fire Rating: UL 790 (Class A)
- Impact Resistance: UL 2218 (Class 4)
- Florida Building Code: #FL 13655-R2



ON-SITE ROLL FORMING



Our unique on-site method of roll-forming standing seam roof panels creates a superior roof system long term and a smoother construction project.

- Greatly reduces shipping cost by shipping materials in coil form instead of fabricated panels.
- Greatly reduces jobsite clutter by fabricating panels directly on the roof.
- Decrease installation times by eliminating lap joints.
- Reduces equipment and handling cost by forming the panels directly on the building.
- Eliminates horizontal lap joints in the roof system that are problematic over time.
- Standing seam roof eliminates the need for exposed fasteners in the field of the roof.

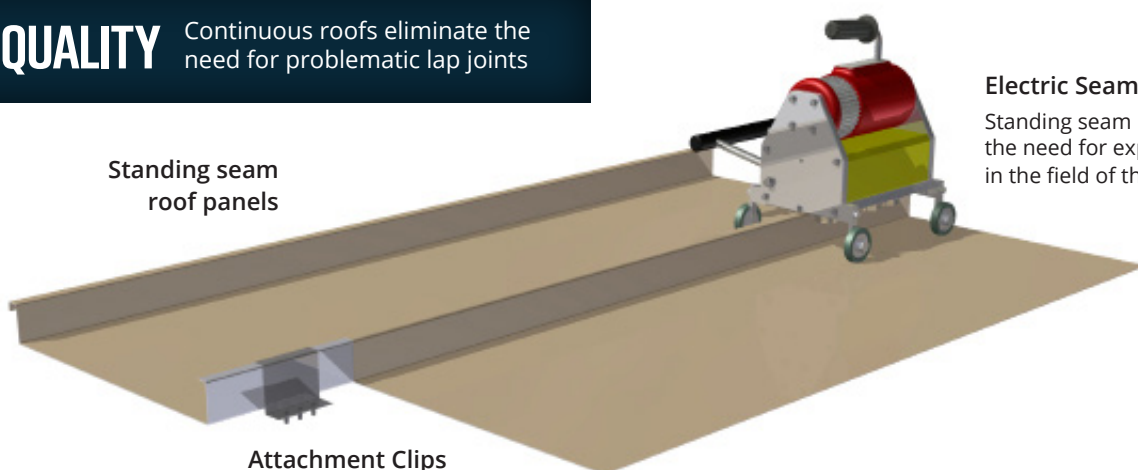


QUALITY

Continuous roofs eliminate the need for problematic lap joints

Standing seam
roof panels

Attachment Clips



Electric Seamer

Standing seam roof eliminates the need for exposed fasteners in the field of the roof.

WHAT OUR CUSTOMERS SAY...

*"Our team at StorageMax has been developing self-storage for over 25 years. We have enjoyed working with and getting to know the team at Storage Structures during that time. We heard about the Alpha Framing system during the design process of our most recent project. After hearing the benefits of the structural system, as well as, the speed of erection, we quickly decided to halt our current design and switch to the Alpha Framing system. **If I could describe Storage Structures in one word, it would be "Execution."** It's very hard to find a vendor that stands by their word, shows up on time, and overperforms. Storage Structures did exactly this. From slab to roof, the Alpha Framing team installed 112,000 square feet in just over four weeks. We are very happy with the final product as well. Compared to traditional systems, adding the partitions after upper floors are poured gives a much cleaner end product to our customers. **We are very excited about this new product and are planning to use it on new projects again soon.**"*

NICK NEWCOMB

Storage Park Development Inc, Jackson, MS

*"Storage Structures is a great partner of ours. They're easy to work with; they do what they say they are going to do. **The Alpha Framing System goes up faster than traditional framing systems, reducing the duration of our overall project schedule.** Our customers have been really pleased with the end product as well. The appearance and finish of the system are high quality; providing a clean, sharp look when we're done."*

JOSH DOSTER, PRESIDENT

JMWilliams Contractors, Atlanta, GA

*"Thoroughly impressed with Storage Structures and the Alpha Framing System! The level of professionalism throughout the company from ownership to project managers to installers was a treat to work with. Hands down, impressed with the Alpha Framing System, too, given that I had an aggressive timeline and installation went so fast. I've seen firsthand how clever and efficient the product is. **A game changer for a variety of construction building industries!**"*

DONOVAN DUFF, 7-YEAR SUPERINTENDENT

Hamilton Place Self Storage, Johnson City, TN

*"**I would definitely use the Alpha Framing System again.** With increased span capabilities, it definitely impacts how to address elevator and office framing. Potential cost and time saving are huge. The construction versatility will soon make it a natural choice for commercial spaces such as offices, hotels, and apartments. That's a boon for everybody forward-looking enough to adopt the system."*

CHRIS BATES, 21-YEAR SUPERINTENDENT

Summerville Self Storage, Summerville, SC

"My crews and I have installed a few Alpha Framing Systems now and I love it. It goes super fast, especially once we get the bottom floor framed. The installation is easy to understand. What I love about it is that we can get in and get out! This system is great because it saves me time and money; it is clean and it is simple."

FRANKLIN, HERNÁNDEZ, OWNER

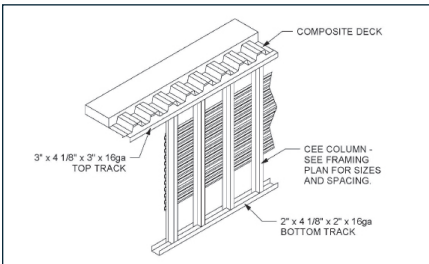
Perfect Framing Structure, LLC, Chesapeake, VA

OUR APPROACH



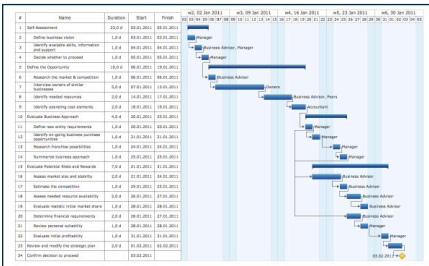
CONCEPT & PROPOSAL

- Highly experienced and responsive sales professionals
- Practical suggestions to facility layout and design
- Communication of current design trends, techniques and pitfalls
- Clear, precise scope of work
- Transparent disclosure of lead times and schedule
- Coordinated planning of initial project schedule



ENGINEER & DRAFT

- Save up to 3 months on construction with our patented Alpha Framing System
- Highly experienced and responsive engineering and drafting professionals
- Long-term industry specific engineers with cost effective design options
- Communication on excessive architectural or engineering designs with practical value engineering options
- Industry leading drafting resources
- World class drafting quality control



PROJECT MANAGEMENT

- Highly trained, experienced, and responsive project managers
- Scheduled with a limited number of projects
- Scheduled regularly to be on the job site
- Focused pre-construction planning and project close out approach
- Effective execution; less time saves money



INSTALLATION

- 25+ years, thousands of projects, all project types, highly complex job site conditions
- Consistent, experienced, English-speaking installers that are proud craftsmen
- Proprietary construction methods that save time
- Long-term strategic relationships with industry leading engineers, installers, suppliers, and related trades
- World class quality control in procurement, installation, and close out

Elevate Structures is a national metal building subcontractor and the leader of innovation and design for the self-storage industry. Our goal is to be ON-SITE, ON-SCHEDULE, ALL THE TIME for your building project.



www.elevatecs.com
info@elevatecs.com · 877.456.1602